



## FUSE DECKING

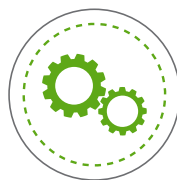
Fuse decking offers the most natural look, feel, and colours available today in luxury dual sided composite decking, all balanced with time-tested durability and performance with none of the maintenance associated with traditional timber decking. Multi-tonal streaking echoes elegant hardwoods and is inspired by natural elements and pigments offering a subdued yet striking composite decking board.



FIRE SAFE



ECO FRIENDLY



LOW MAINTENANCE



ANTI SLIP



UV STABLE



EASY CLEAN



LONG LASTING



LOW LIFE CYCLE COST



ORIENTAL JADE



BURNT OAK



STEEL GREY



COPPER ELM

- **Reversible Design** - Features a dual colour finish allowing for flexible styling options
- **Fire Resistant Technology** - Built with fire retardant properties, offering enhanced safety for residential and commercial applications
- **Durable and Low Maintenance** - Resistant to rot, splintering and warping, ensuring longevity with minimal upkeep
- **Slip Resistant and Weatherproof** - Textured surface enhances grip for added safety, while the material withstands harsh weather conditions for year round use
- **Eco-Friendly and Sustainable** - Constructed from recycled materials, making it an environmentally conscious alternative to traditional wood decking

<b>Description</b>	Solid reversible decking board (FSC 100%)
<b>Finish</b>	Enhanced woodgrain
<b>Size (mm)</b>	3600 x 140 x 23
<b>Weight (kg)</b>	13.3



**3 MM MOUNTING CLIP**

46 x 14mm black electro plated concealed stainless steel mounting clip



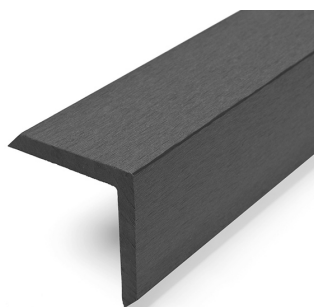
**6mm MOUNTING CLIP**

40 x 19mm black plastic mounting clip



**STARTER CLIP**

36 x 24mm black electro plated stainless steel starter clip.



**EDGING TRIM**

46 x 14mm black electro plated concealed stainless steel mounting clip



**WOOD SCREW**

4 x 35mm black electro plated stainless steel wood screw.